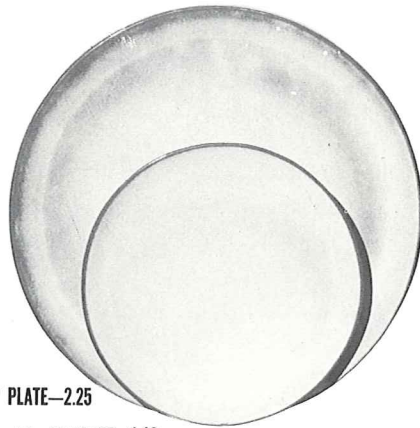




*4K—BUTTER DISH—2.50



6F—10" PLATE—2.25

6G—7" PLATE—1.10



*6B—SUGAR WITH LID—1.75



*6A—9 OZ. CREAMER—1.25

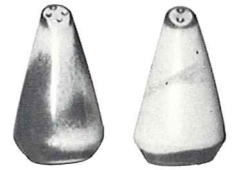


*6VT—2 1/2 QT. TUREEN—5.00



6C—CUP—1.00

6E—5" WELLED SAUCER—.90



*6H—SALT & PEPPER—1.50



*6V—2 1/2 QT. BAKER—5.00



*5LC—6 OZ. JUICE—.90



*5L—12 OZ. TUMBLER—1.10



*6CL—DOUBLE COFFEE—1.25



*80—2 QT. PITCHER—4.00



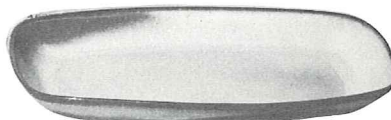
*81—1 QT. PITCHER—2.50



*6T—6 CUP TEAPOT—3.50



*6VS—1 1/2 QT. BAKER—4.00



*5QS—13" STEAK PLATE (SHALLOW PLATTER)—2.25

*6P—11" STEAK PLATE—2.00

*5PS—9" TRAY—1.50



*6J—2 CUP TEAPOT—2.00



*6S—TWO SPOUT GRAVY—2.50



*6U—18 OZ. BAKER FOR TWO—3.00
A COVERED CANDY DISH

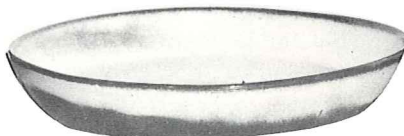


*BP—6 OZ. BEAN POT—.90

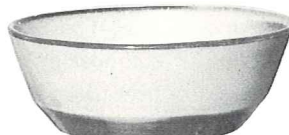


6X—14 OZ. CHILI SOUP—1.25

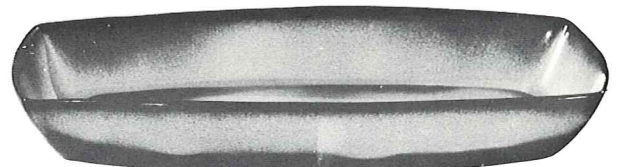
6XS—10 OZ. FRUIT—.90



*91—10" BAKING DISH—2.50

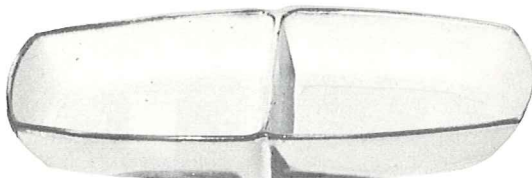


*6N—1 QT. BOWL—2.00

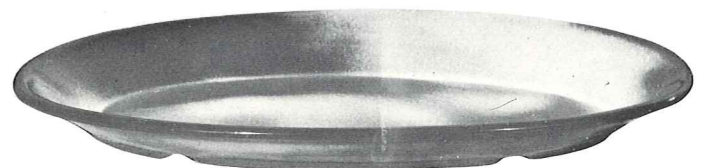


5P—17" DEEP PLATTER—7.00

5Q—13" DEEP PLATTER—3.50



5QD—13" DIVIDED BOWL—3.50



TP—17" OVAL PLATTER—7.00

THIS PAGE AVAILABLE IN PEACH GLOW, PRAIRIE GREEN, WOODLAND MOSS AND WHITE SAND EXCEPT WHERE NOTED *

* AVAILABLE IN ALL COLORS—ADD 50% FOR FLAME

SIZES ARE APPROXIMATE AND MAY VARY SLIGHTLY.